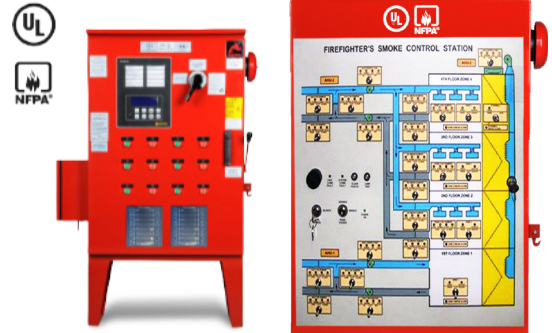


# NAFFCO

## Starter Panel & Fire/Smoke Control Station

Designed and manufactured to the highest standards in a quality controlled environment and with UL & FM approvals, the NAFFCO/SHIELD panel offers outstanding value and performance for all Smoke Management installations.

The Control Panels are manufactured to the requirements of UL 864.

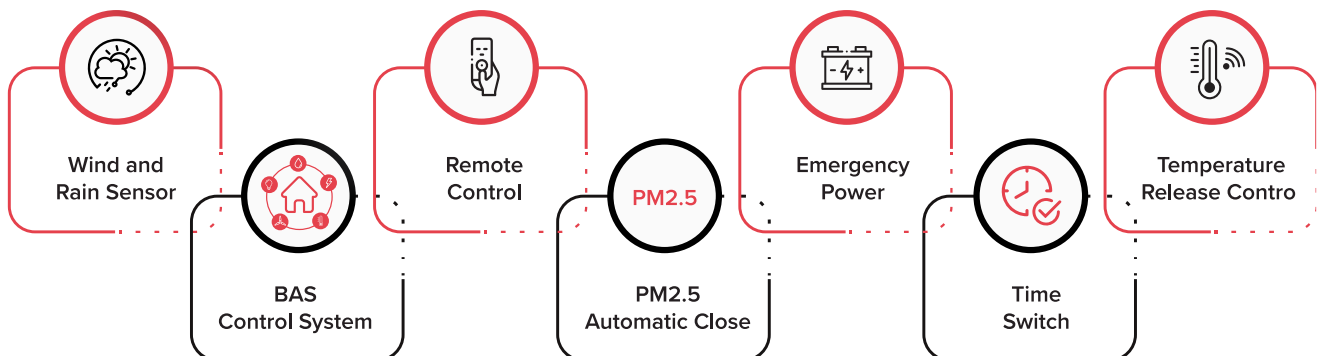


## CONTROL SYSTEM

24V DC electric actuators and control box are used for electric control system which can be linked with FAS and controlled by manual.



## Optional Functions of Electric NFSMV



## THE FEATURES OF PNEUMATIC CONTROL SYSTEM

- Current overload protection for actuators.
- Output voltage of control box is adjustable.