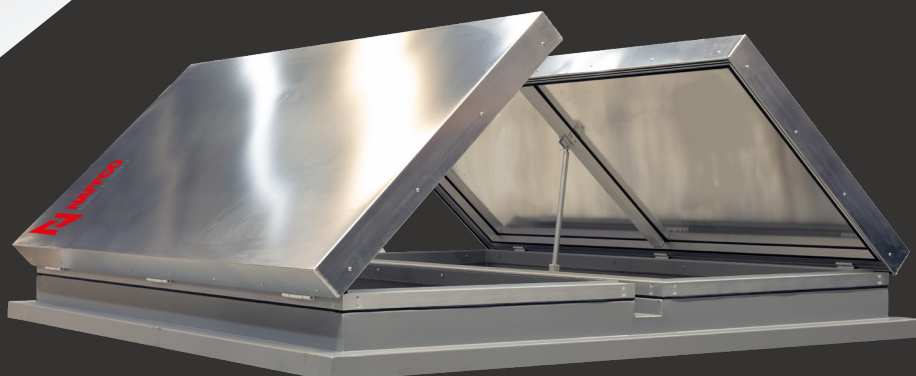
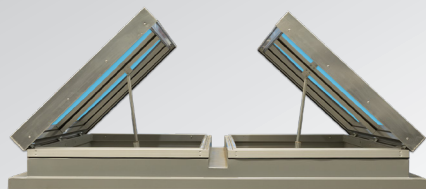
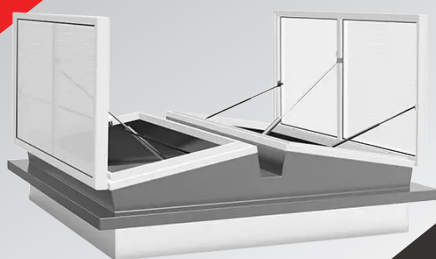
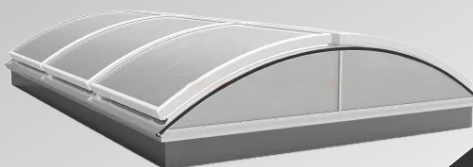




# SMOKE MANAGEMENT

Smart Engineering Solutions

## SMOKE VENTILATOR





# SMOKE VENTILATOR



# CONTENTS

1. Our Team	04
2. Natural Smoke Ventilator	06
3. Naffco Smoke Vent Series	08
4. Naffco NFSMV Smoke Ventilation	10
5. Naffco Curve Ventilator	11
6. Naffco Taper Smoke Ventilator	12
7. Naffco Curve Smoke Ventilator	13
8. Naffco Commercial Buildings	14
9. Naffco Control System	16
10. Our Clients	17

# OUR TEAM

# 01

# OUR TEAM



NAFFCO hold a professional designing team for supplying systematic solution to natural skylight, ventilation and smoke ventilation. We pay high attention to quality control in every procedure such as purchasing, production, package, logistics and installation. We provide perfect user experience for you with our professional product and service.



## Production Service

Our product portfolio includes the highest quality of smoke ventilation, natural ventilation and in addition to a full line of axial fans. We are always strictly conforming to ISO9001 standard to control the quality in every procedure.



## Installation Team

NAFFCO provide customized construction plan and professional technical support.



## Logistics Service

We have independent logistics department and systematic logistics management system. We supply safe, reliable, economical and high quality logistics service for our clients.



## Sales Service Team

Our domestic sales network spreads all over the world. Our headquarter is located in Dubai. Our products and services have been supplied to more than 100 countries all over the world.



## After sales support Team

- Preventive Maintenance Services
- Technical Expertise
- Emergency Repair Services
- Warranty Management
- Technical Support and Troubleshooting
- Spare Parts Availability
- User Training and Documentation
- Performance Monitoring and Reporting
- Sustainability and Energy Efficiency Consulting
- Customer Relationship Management
- Feedback and Continuous Improvement



# NAFFCO NATURAL SMOKE VENTILATOR

# 02

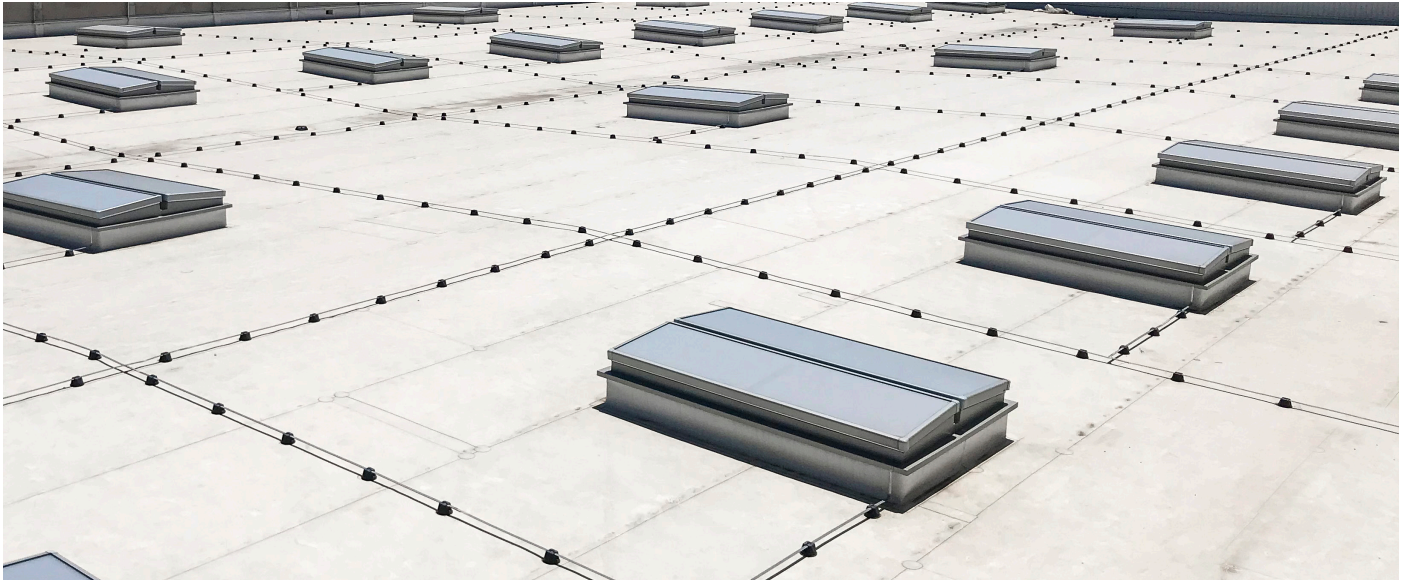


# NAFFCO NATURAL SMOKE VENTILATOR



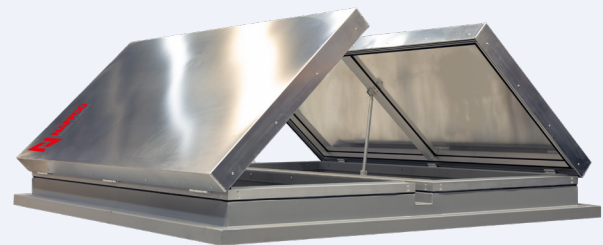
NFSMV is a product that integrates functions of natural ventilation, natural skylight and fire smoke exhaust. It's applied in various buildings such as civil, industrial, commercial and public places. NAFFCO has got a number of patented technologies and created a seamless corner design for NFSMV. All products meet structural waterproofing, with excellent air tightness, water tightness, wind pressure resistance, high temperature resistance, low temperature resistance, etc.

★ NFSMV are tested and certified by APPLUS (EN 12101-2 Smoke and heat control system)

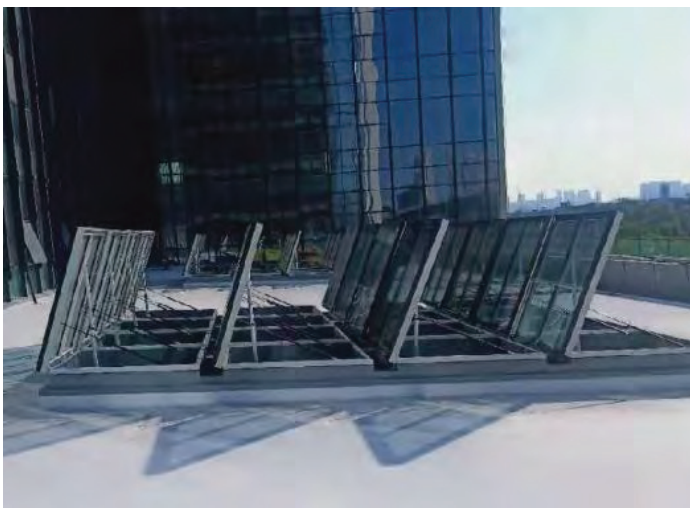


NAFFCO is the integrated supplier of natural smoke vent system which include smoke vent structure, actuators, control cabinets.

**APPLUS EN 12101-2**  
**(Smoke And Heat Control System)**



Applus<sup>+</sup>



NFSMV products are water tightness, air tightness and heat insulation. The structural water proof performance presents excellently in the application.

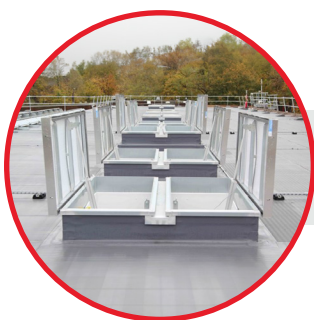


# 03

## **SMOKE VENT SERIES**



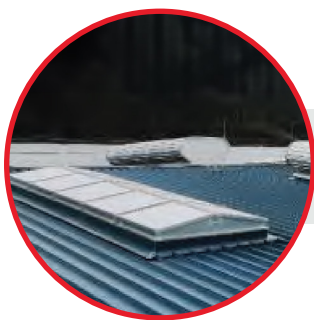
# NAFFCO SMOKE VENT SERIES



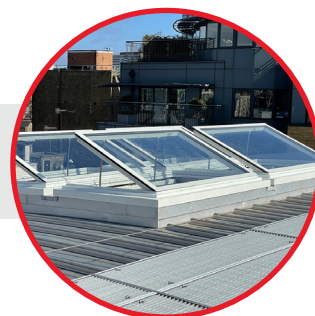
**NAFFCO NFSMV**



**NAFFCO CURVE NFSMV**



**NAFFCO TAPER NFSMV/T**

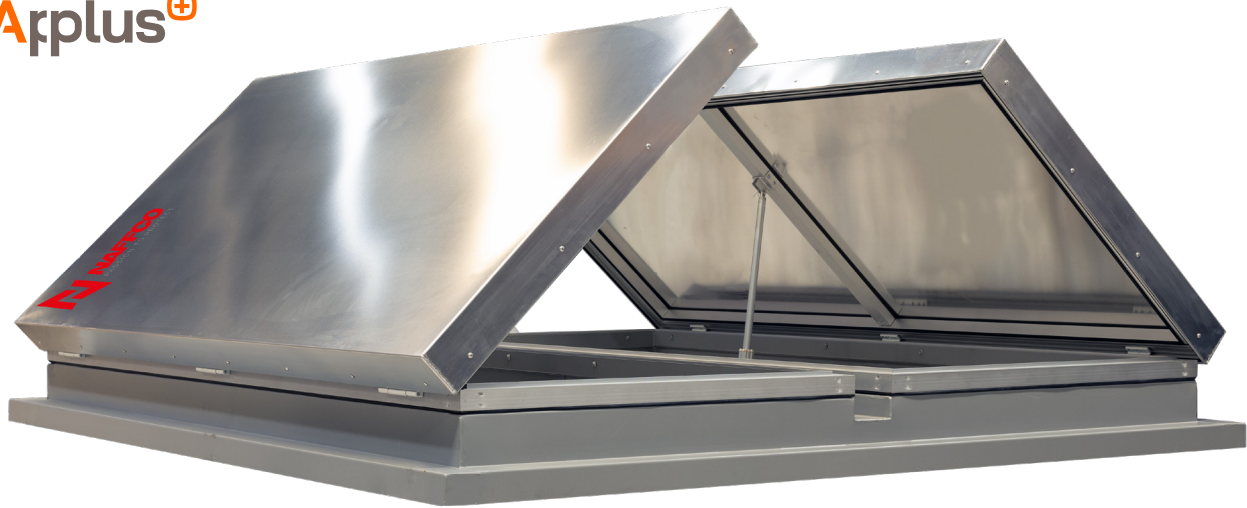


**COMMERCIAL NFSMV/C**

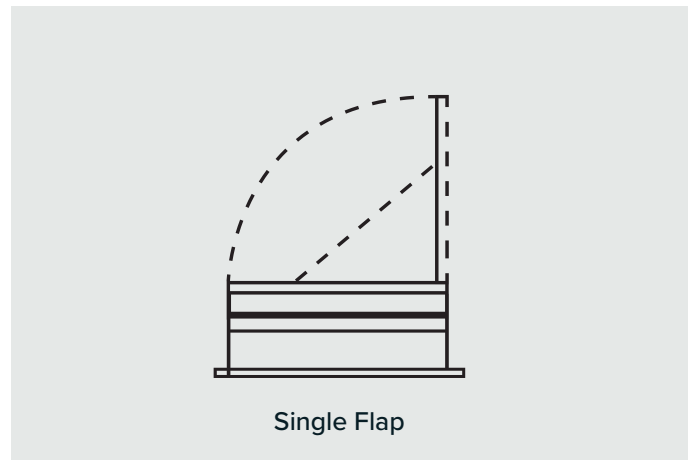
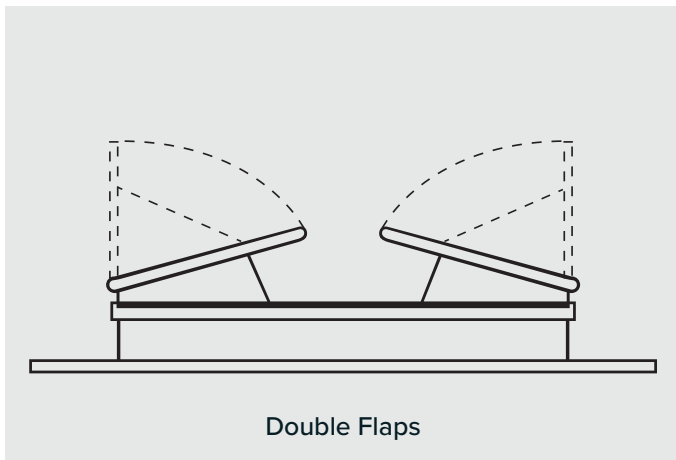


**NAFFCO CONTROL SYSTEM**

# NAFFCO NFSMV SMOKE VENTILATOR



## NAFFCO NFSMV



## Technical Performances and Strengths

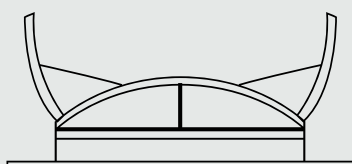
NAFFCO smoke vents are **Applus** Tested and **CE** certified for fire resistance of a natural smoke and heat exhaust ventilator tested at 300 °C, accordance with **Annex G** of the Standard **EN 12101-2** "Smoke and heat control systems. Part 2: Specification for natural smoke and heat exhaust ventilators. The smoke vents are tested and passed for Reliability test according to **Annex C**, Opening under load according to **Annex D** & Wind load according to **Annex F** of the Standard **EN 12101-2**.

NFSMV will offer wide range of models with single flap and double flap options. The dimensional ranges from 1000 x 1000 mm to 2300 x 2300 mm .  
For customized sizes requirements please consult.

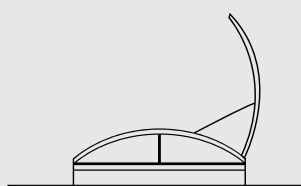
# NAFFCO CURVE NFSMV/S SMOKE VENTILATOR



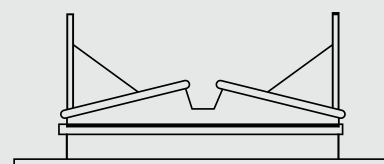
## NAFFCO CURVE NFSMV - TYPE AVAILABLE



Arched Double Flaps



Arched Single Flap



Flat Double Flaps

## Technical Performances and Strengths

- Aluminum alloy profile with seamless corner, which has superior waterproof and corrosion resistant performance.
- Glazing can be replaceable for easy maintaining.
- Wind load resistance: operational certainty of vents under wind stress equivalent to 1500 Pa
- Water Proof
- Air leakage
- K value: lower than 2.2 W/(m<sup>2</sup>.K)
- Low temperature resistance: -25°C.
- High temperature resistance: 300°C for 30 mins.
- Reliability: 20000 cycles times opening and closing for daily ventilation, 1000 cycles times opening and closing for smoke exhausting.
- Snow load: operational certainty of vents under snow load 500Pa

### Seamless Corner

Waterproof and Durable

### Built-in Hinge

Safe and Reliable

### Superior Performance

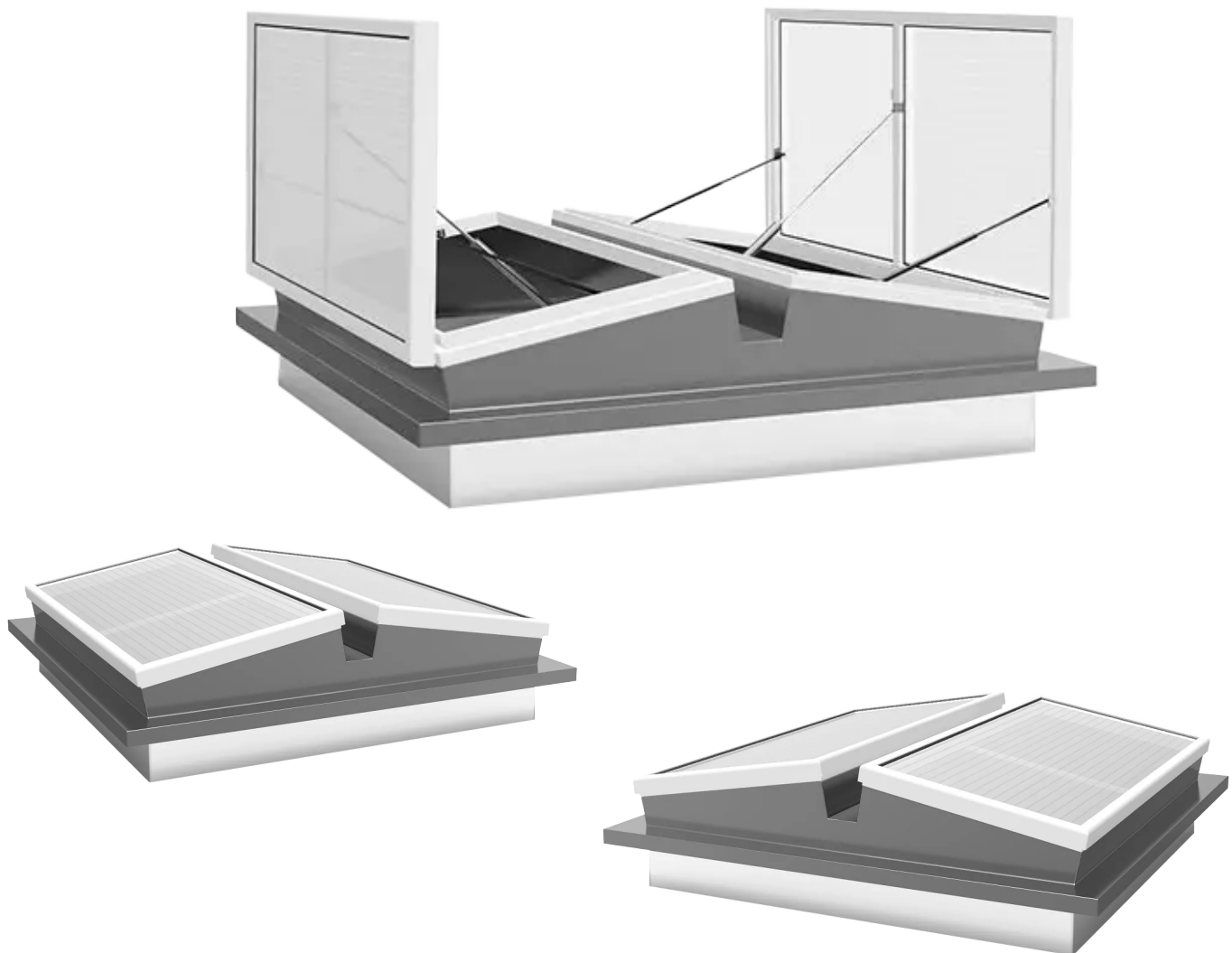
Superior Quality

### Glazing Replaceable

Easy for Maintaining



# NAFFCO TAPER NFSMV/T SMOKE VENTILATOR



## Technical Performances and Strengths

- Anodized aluminum alloy profile supplies good waterproofing and corrosion resistance.
- Wind load resistance: operational certainty of vents under wind stress equivalent to 1500 Pa
- Water Proof
- Air leakage
- K value: lower than 2.7 W/(m<sup>2</sup>.K)
- Low temperature resistance: -25°C.
- High temperature resistance: 300°C for 30 mins.
- Reliability: 20000 cycles times opening and closing for daily ventilation, 1000 cycles times opening and closing for smoke exhausting.
- Snow load: operational certainty of vents under snow load 500Pa.

**Economical**

Cost Saving

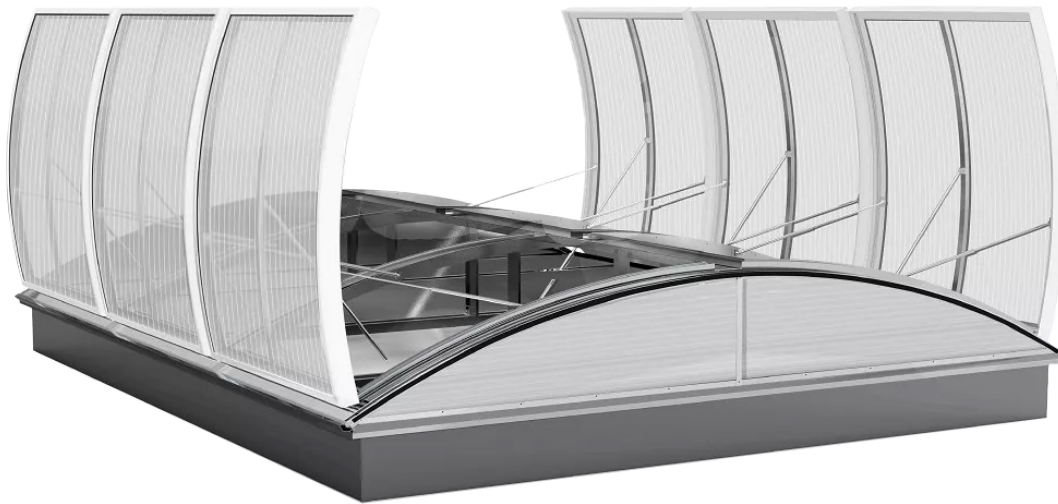
**No Glue No Nail**

Elegant

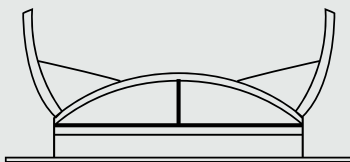
**Structural Waterproof**

Well Designed

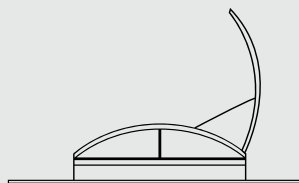
# NAFFCO CURVE NFSMV/D SMOKE VENTILATOR



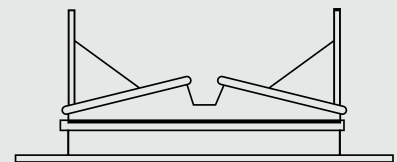
## NAFFCO NFSMV CONTROL SYSTEM-ELECTRIC



Arched Double Flaps



Arched Single Flap



Flat Double Flaps

## Technical Performances and Strengths

- Anodized aluminum alloy profile supplies good waterproofing and corrosion resistance.
- Wind load resistance: operational certainty of vents under wind stress equivalent to 1500 Pa
- Water Proof
- Air leakage
- K value: lower than 2.2 W/(m<sup>2</sup>.K)
- Low temperature resistance: -25°C.
- High temperature resistance: 300°C for 30 mins.
- Reliability: 20000 cycles times opening and closing for daily ventilation, 1000 cycles times opening and closing for smoke exhausting.
- Snow load: operational certainty of vents under snow load 500Pa.

### Seamless Corner

Waterproof and Durable

### Built-in Hinge

Safe and Reliable

### Superior Performance

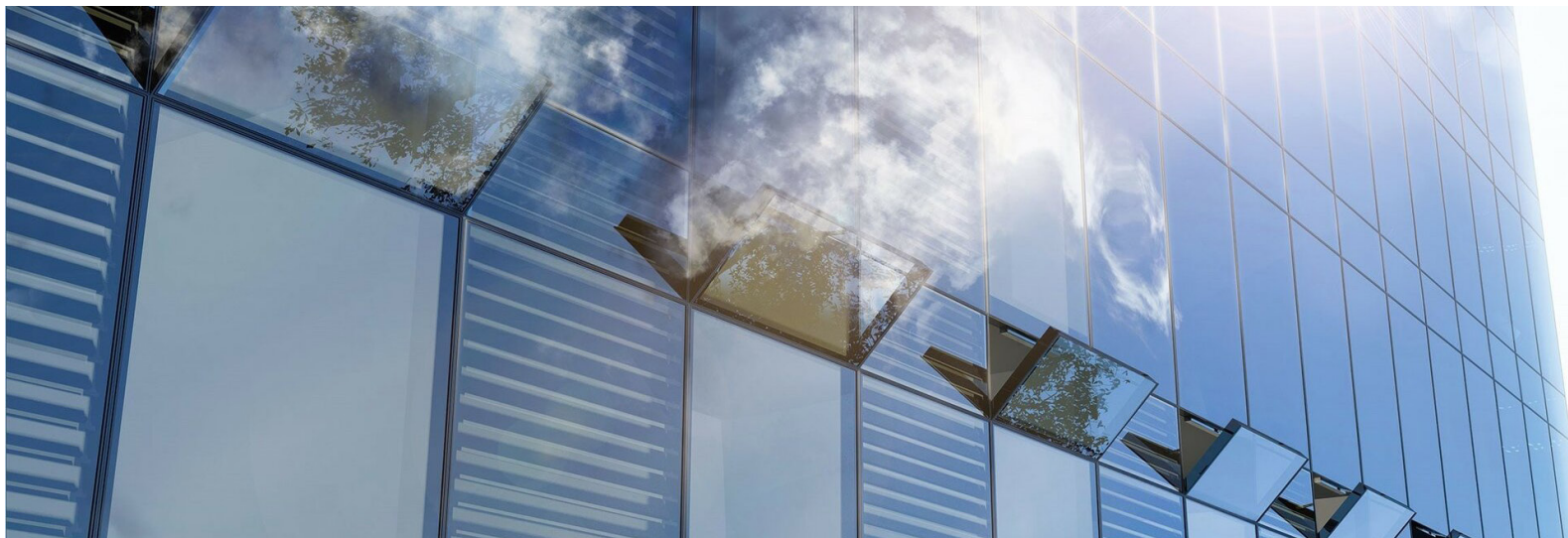
Superior Quality

### Glazing Replaceable

Easy for Maintaining

# NAFFCO NFSMV/C

## COMMERCIAL BUILDINGS



### NAFFCO NFSMV CONTROL SYSTEM-ELECTRIC



Top-Hung Module Design



Bottom-Hung Module Design



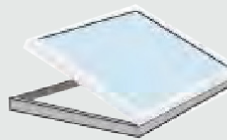
Facade Louver



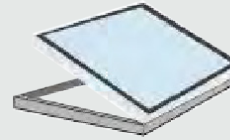
Top-Hung Outward Window



Bottom-Hung Outward Window



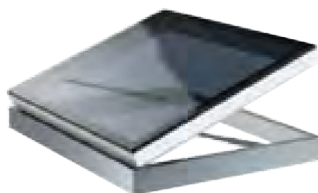
Roof Window With Exposed Frame



Roof Window With Hidden Frame

### Product Features

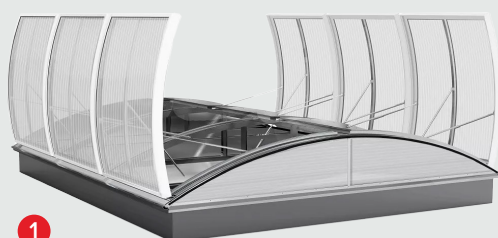
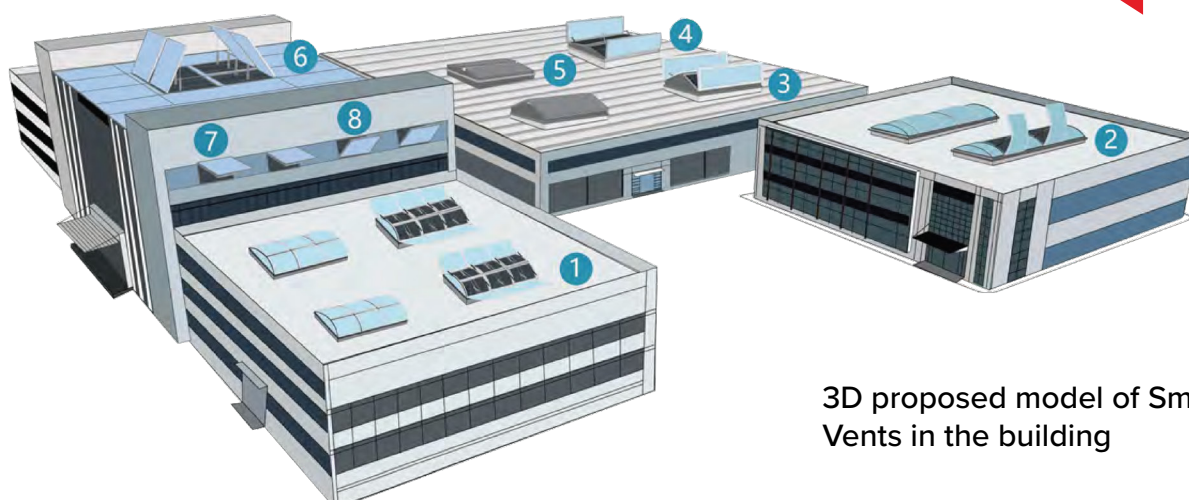
- Elegant appearance
- High light transmittance
- Matching with glass curtain wall
- Structural waterproofing performance
- Remote control system available



### Technical Parameters

- Frame structure: Heat insulated aluminum alloy profile as frame. Hollow tempered laminated glass for side window and hollow laminated glass for top window as glazing.
- Control system: 24V DC electric actuator or pneumatic cylinders.
- Product Dimension: Width 1.2m-1.8m, length 1.5m-2.5m.





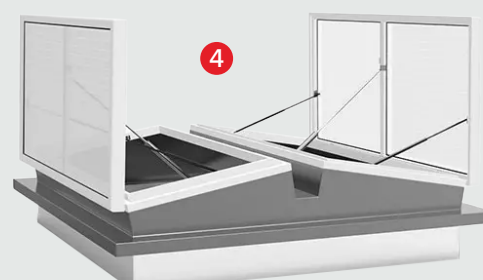
Arched Double Flaps



Triangle Double Flaps



Arched Single Flap



Flat Double Flaps



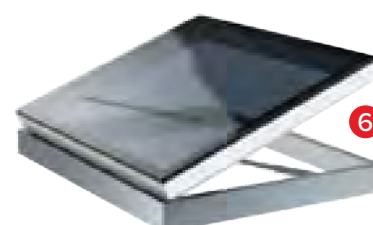
Flat Aluminum Alloy  
Smoke Vent



To Hung Window



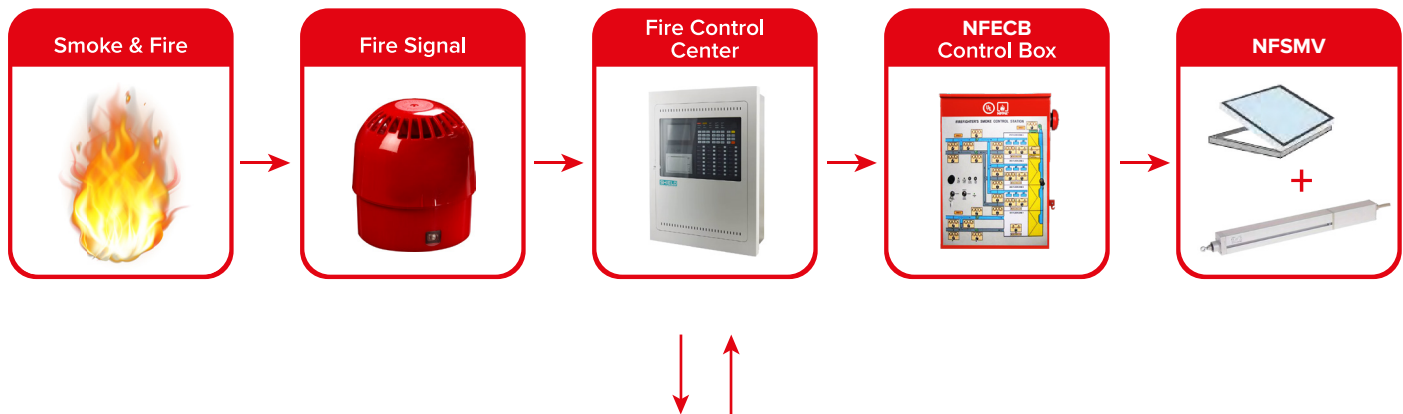
Under Hung Window



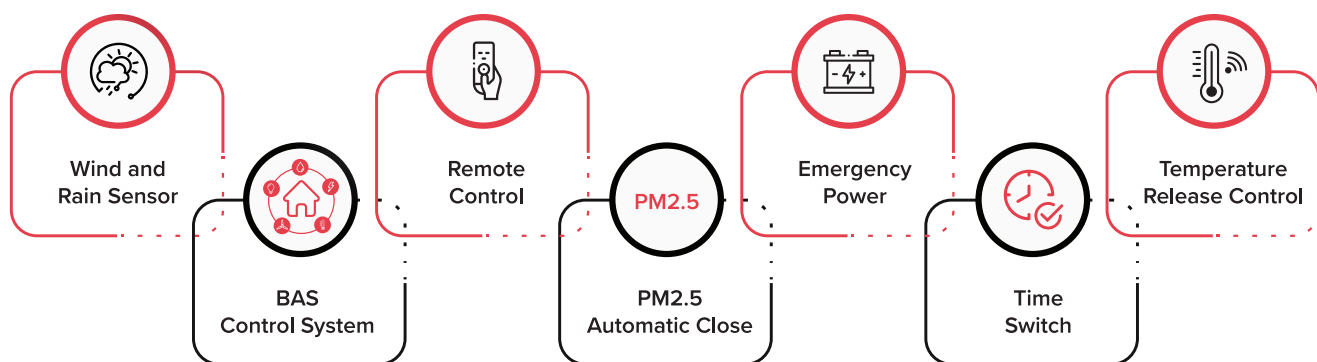
Hollow Tempered Laminated  
Glass Smoke Vent

# NAFFCO CONTROL SYSTEM

24V DC electric actuators and control box are used for electric control system which can be linked with FAS and controlled by manual.



## Optional Functions of Electric NFSMV



## The Features of Pneumatic Control System

- Current overload protection for actuators.
- Output voltage of control box is adjustable.

## RoHS BUILDING



NAFFCO always adhering to the concept of natural energy saving and advocating a sustainable future for buildings to bring more excellent energy saving products for more buildings.

## OUR CLIENTS

NAFFCO is the leading manufacturer of natural skylight, ventilation and smoke exhausting products. Our clients come from different countries in the world.



*As a member of NAFFCO Group, our success is driven by our "Passion to Protect"; our vision is to become the world's number one provider of innovative solutions in protecting life, environment and property.*





Serving Over 100 Countries Worldwide



**NAFFCO®**

Email: [info@naffco.com](mailto:info@naffco.com)

[www.smoke-management.com](http://www.smoke-management.com)

In line with NAFFCO policy for continuous product development,  
NAFFCO has the right to change specifications without prior notice.